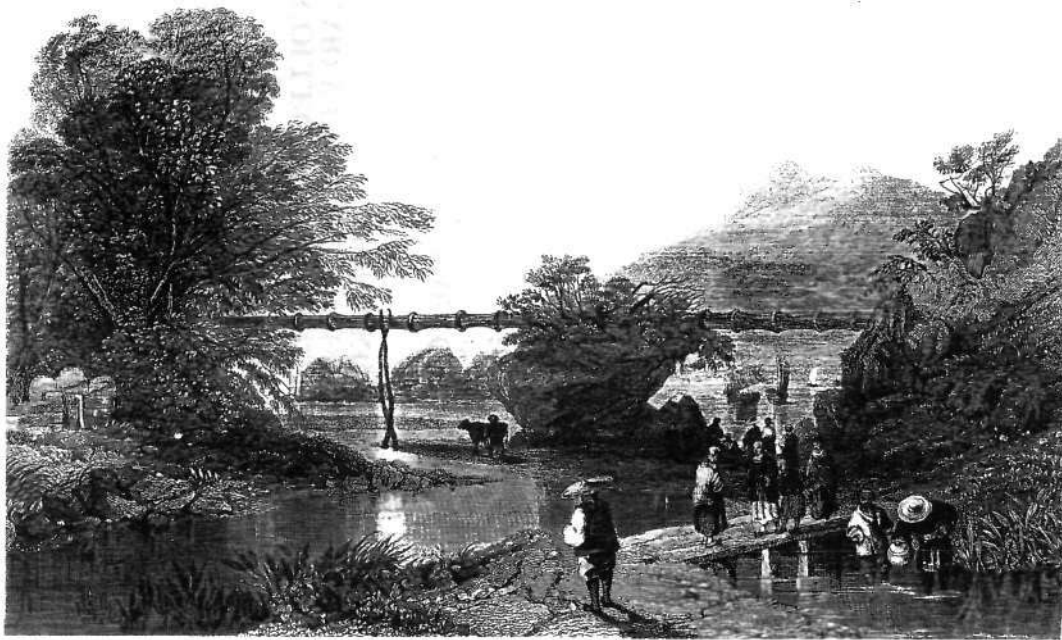


***SPECIAL FEATURE***

**A COLLECTION OF RARE PHOTOGRAPHS OF  
EARLY CIVIL ENGINEERING PROJECTS IN  
HONG KONG**

**C. MICHAEL GUILFORD**



Bamboo aqueduct and simple slab footbridge, probably Happy Valley, 1838  
Allom copy (1843) of Auguste Bouget sketch



Old footbridge near Tai Po HK Museum of History, Provisional Urban Council



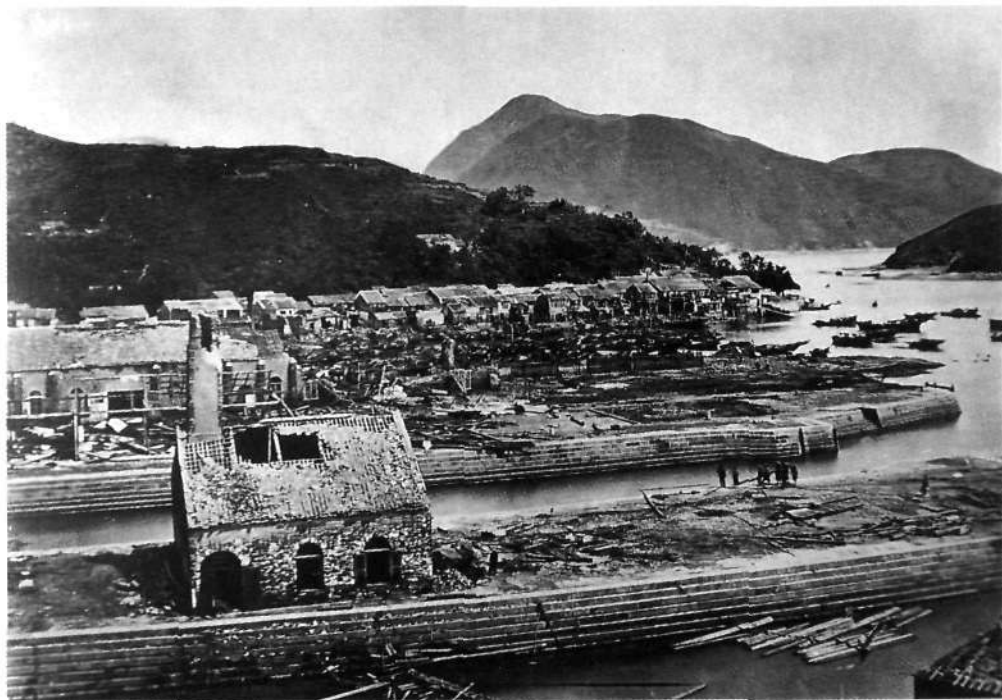
Old Kowloon City Pier, c1910, Government Information Services, HK



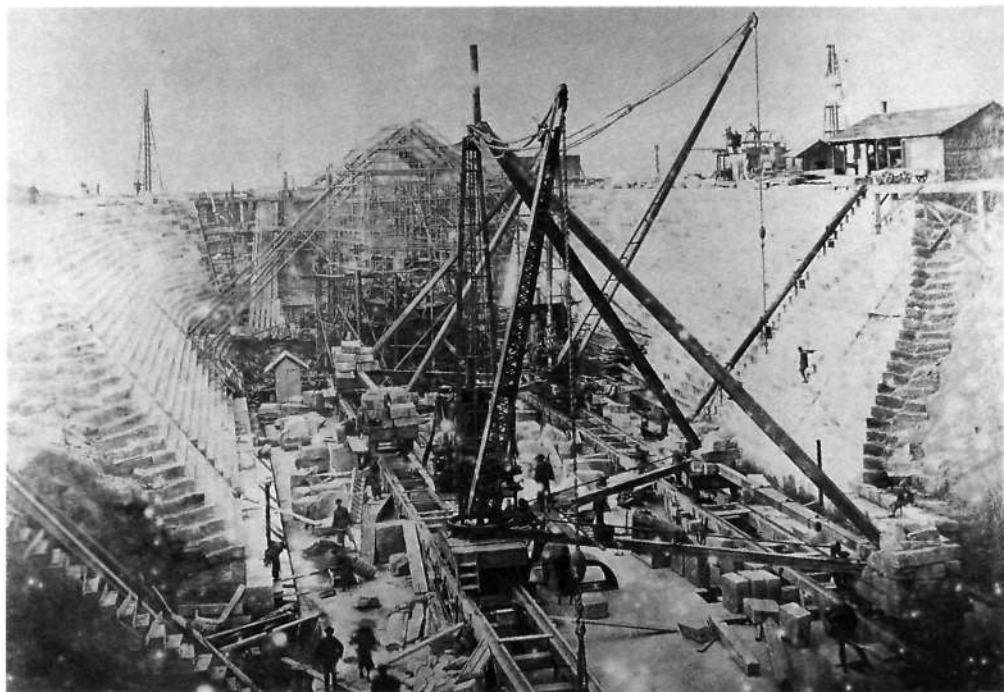
Wooden Water-wheel in old village building near Tsuen Wan  
HK Museum of History, Provisional Urban Council



Wan Chai, Kellett Island and earlier Causeway Bay Typhoon Shelter, c1900  
HK Museum of History, provisional Urban Council

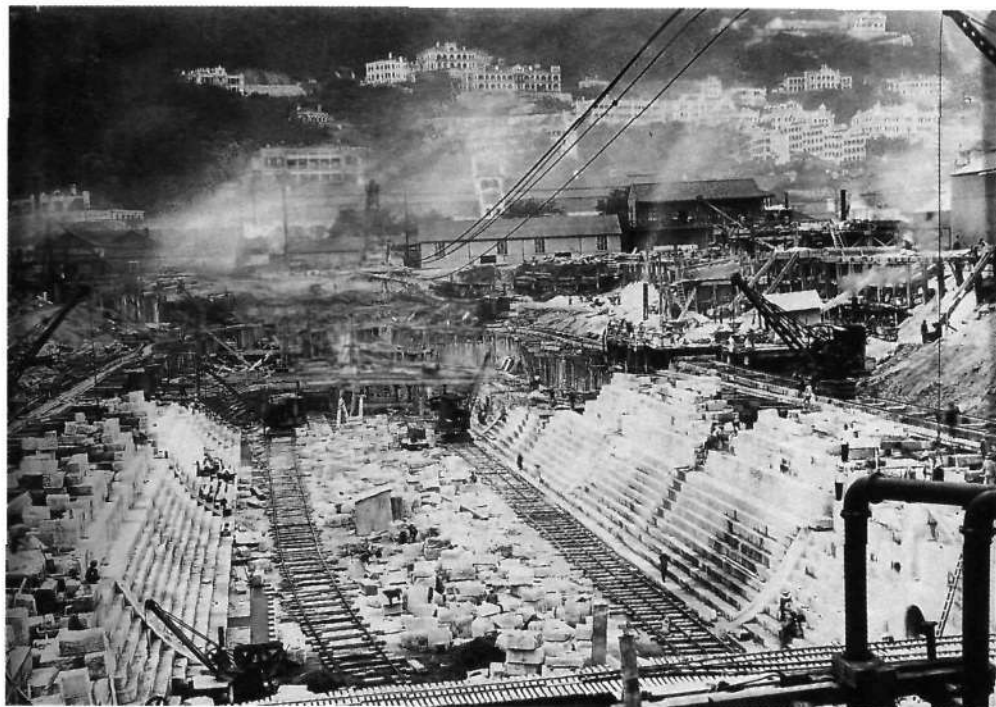


Aberdeen Docks after typhoon, 1874  
Government Information Services, HK

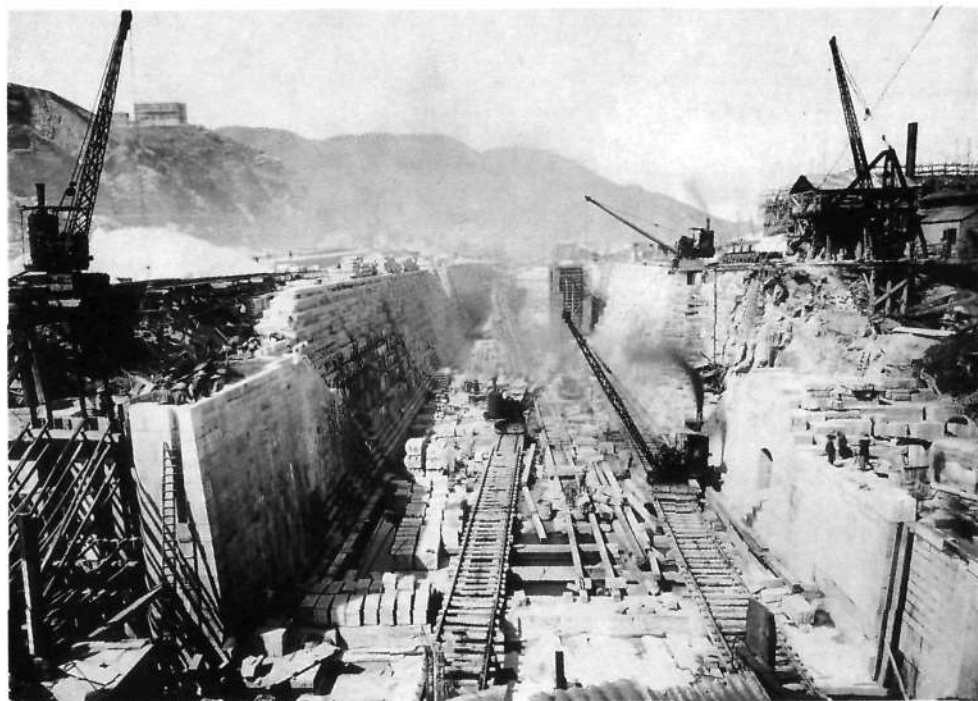


Admiralty Dock at Hung Hom under construction, c1885  
HK Museum of History, Provisional Urban Council





Naval Dry Dock in Victoria under construction, 1905  
HK Museum of History, Provisional Urban Council



Tai Koo Graving Dock under construction, 1906

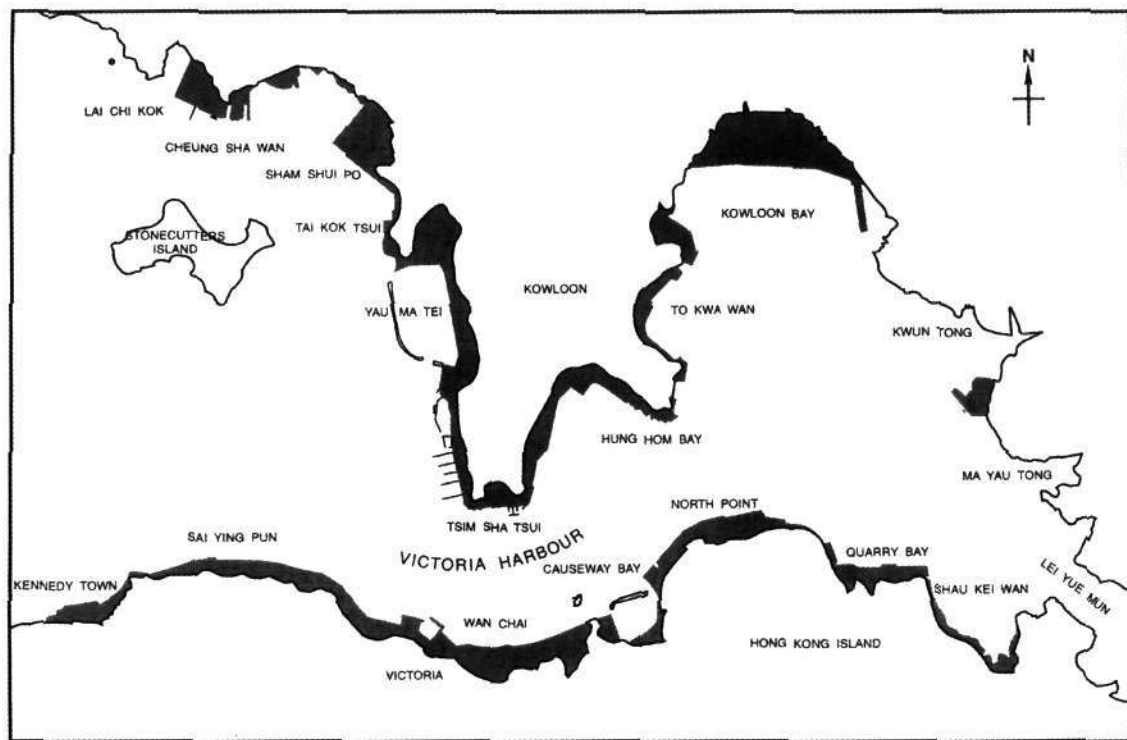
John Swire & Sons (HK) Ltd/ HK Museum of History, provisional Urban Council



Tai Koo Graving Dock and Main Slipway nearing completion, 1907  
John Swire & Sons (HK) Ltd/ HK Museum of History,  
Provisional Urban Council



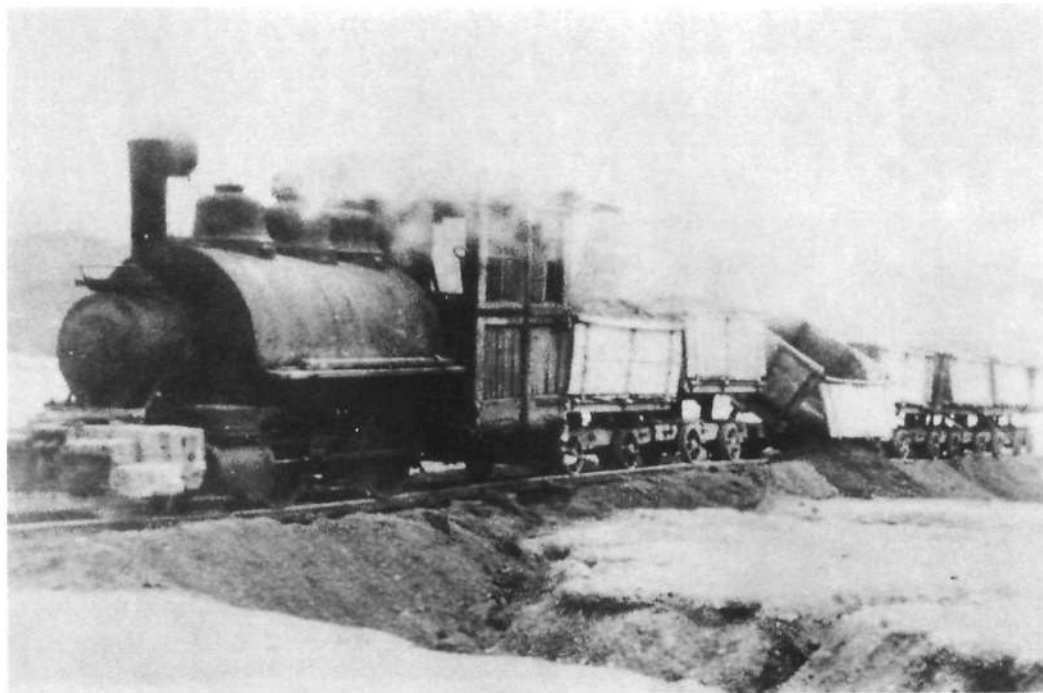
Damaged Jetty in Victoria and remains of steamers sunk in typhoon, 1874  
HK Museum of History, provisional Urban Council



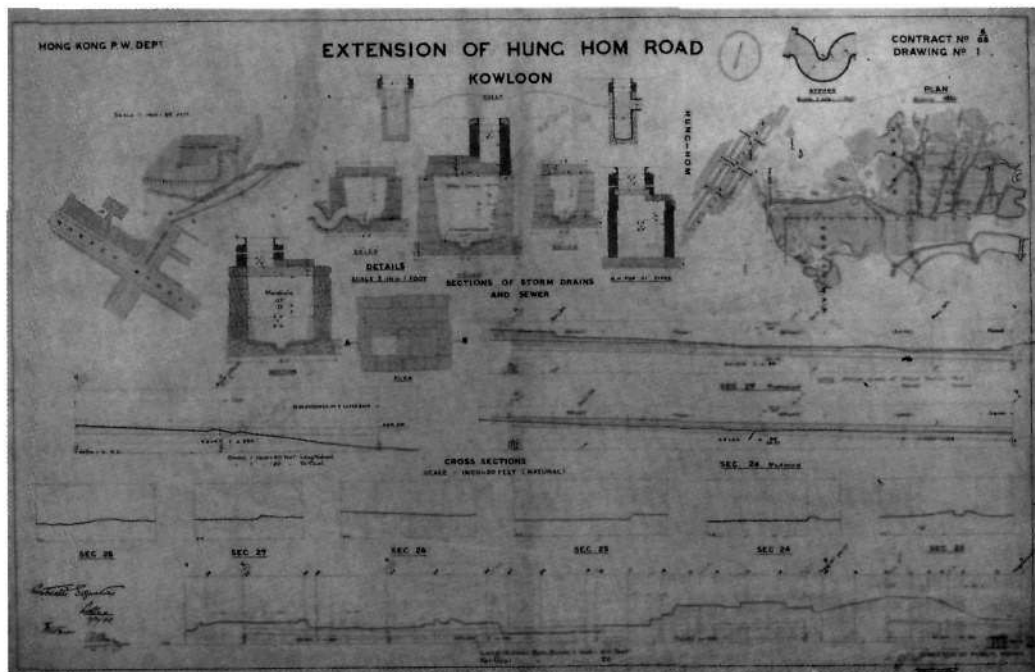
Harbour Reclamations-1841 to 1941, HK Annual Report 1963 (adapted)



Reclamation works in progress in Victoria, c1895 HK Museum of History, provisional Urban Council



Side-tipping in progress for Kai Tak reclamation, c1930  
Ian M Thomas, Kowloon-Canton Railway Corporation



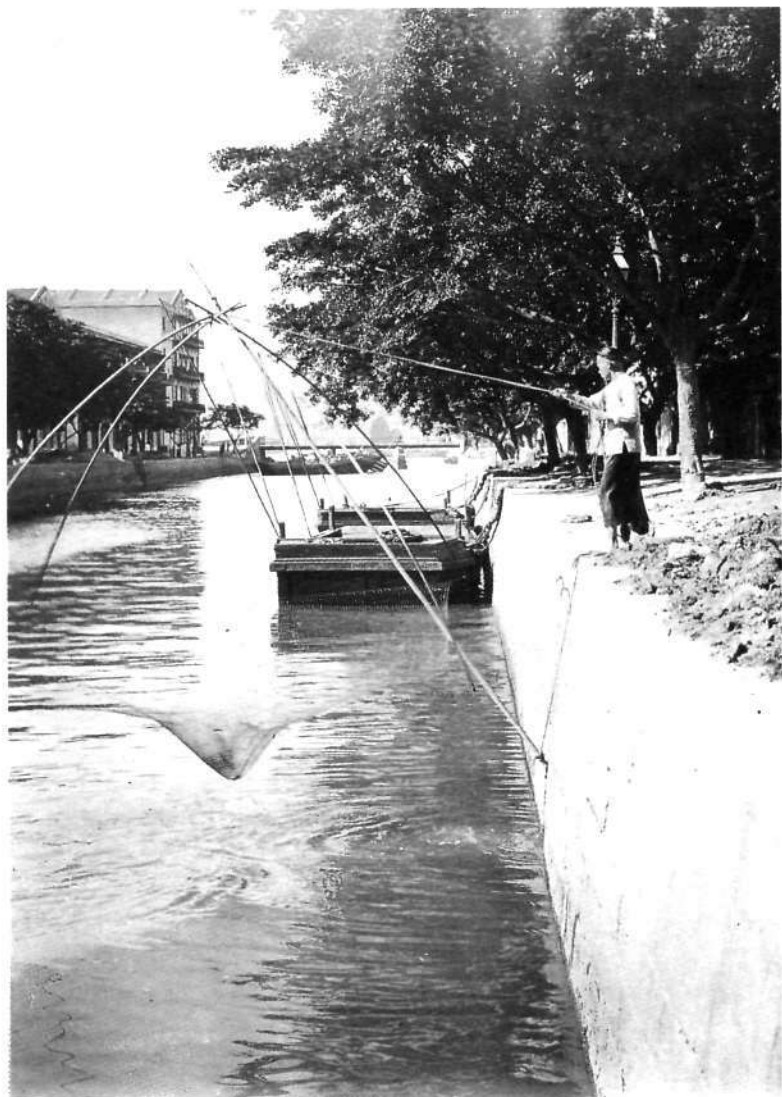




Robinson (later Nathan) Road, c1904  
HK Museum of History, provisional Urban Council



MacDonnell (now Canton) Road and Signal Station, c1890  
Government Information Services, HK



Bowrington Canal leading from Happy Valley, c1905  
HK Museum of History, provisional Urban Council



Burst Storm-water Drains in Victoria causing severe road damage, probably 1874  
HK Museum of History, provisional Urban Council



Peak Tramway soon after completion, c1890  
HK Museum of History, Provisional Urban Council



Kowloon-Canton Railway-Embankment construction north of Ma Liu Shui, c1907  
Kowloon-Canton Railway  
Corporation/ Provisional Regional Council



Kowloon-Canton Railway-Beacon Hill Tunnel under construction, c1908  
Public Records Office, HK



Bowen Road Tunnel Portal discharging water from Tai Tam Reservoir, inscribed 1883-8  
HK Museum of History, provisional Urban Council

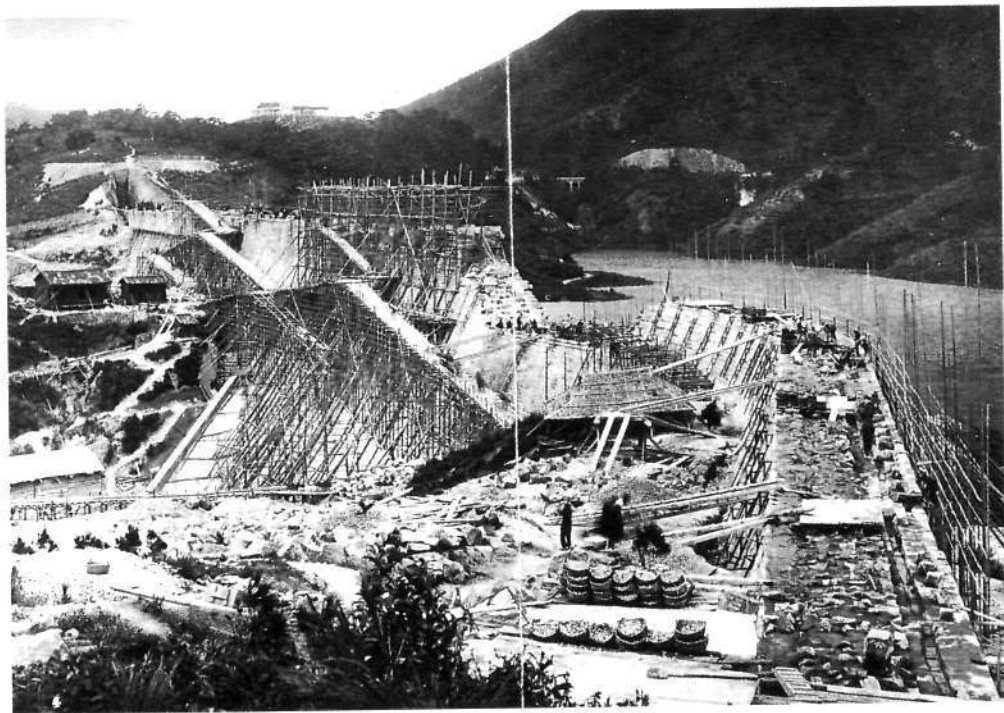




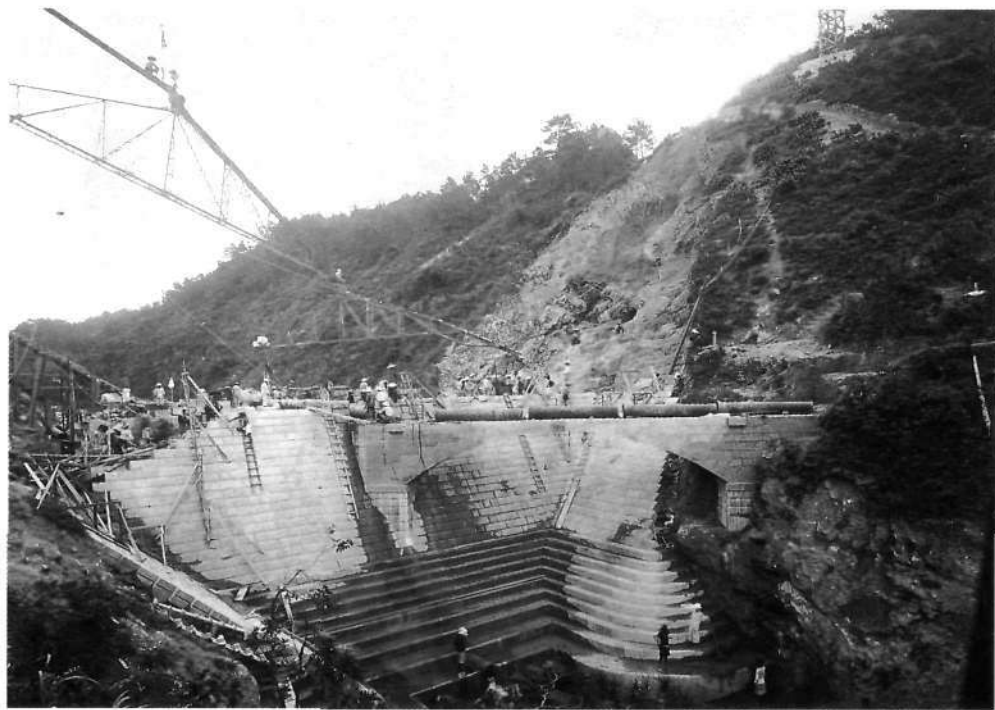
Quarry Bay/Quarry Gap Cableway, 1892  
John Swire & Sons (HK) Ltd



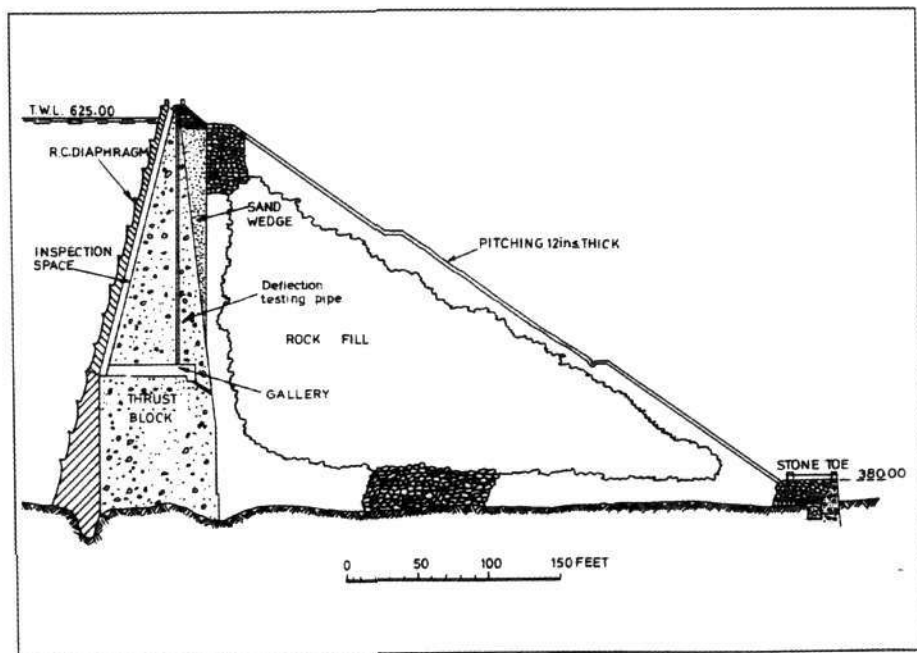
Quarry Bay No 5 Dam, 1901  
John Swire & Sons (HK) Ltd/  
HK Museum of History, Provisional Urban Council



Tai Tam Tuk Dam under construction, c1916  
Public Records Office, London & HK

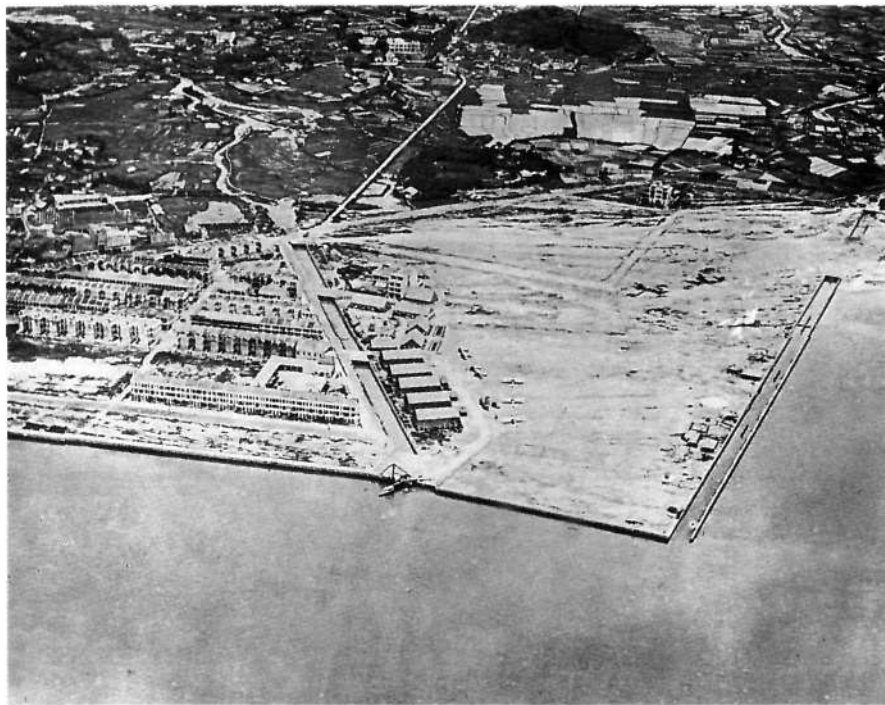


Aberdeen Lower Dam under reconstruction, c1932  
HK Museum of History, Provisional Urban Council

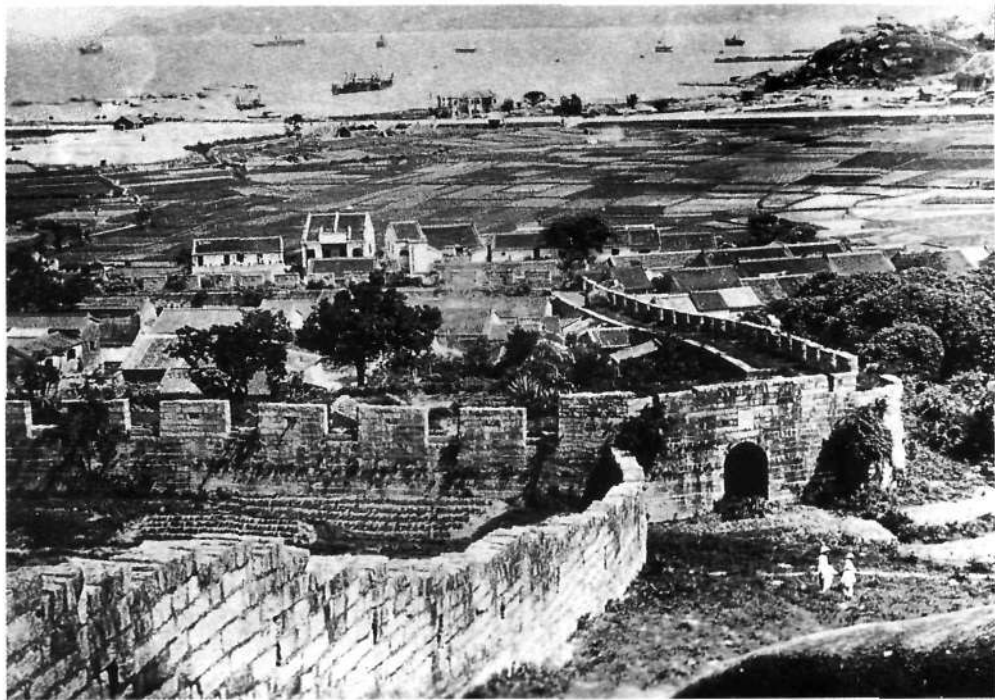


*Cross section of Gorge dam*

Gorge Dam Cross-section, Shing Mun Reservoir, 1936  
 Binnie Consultants Ltd/Binnie Black & Veatch



Kai Tak Aerodrome with nullah construction in progress, 1928  
HK Historical Aircraft Association

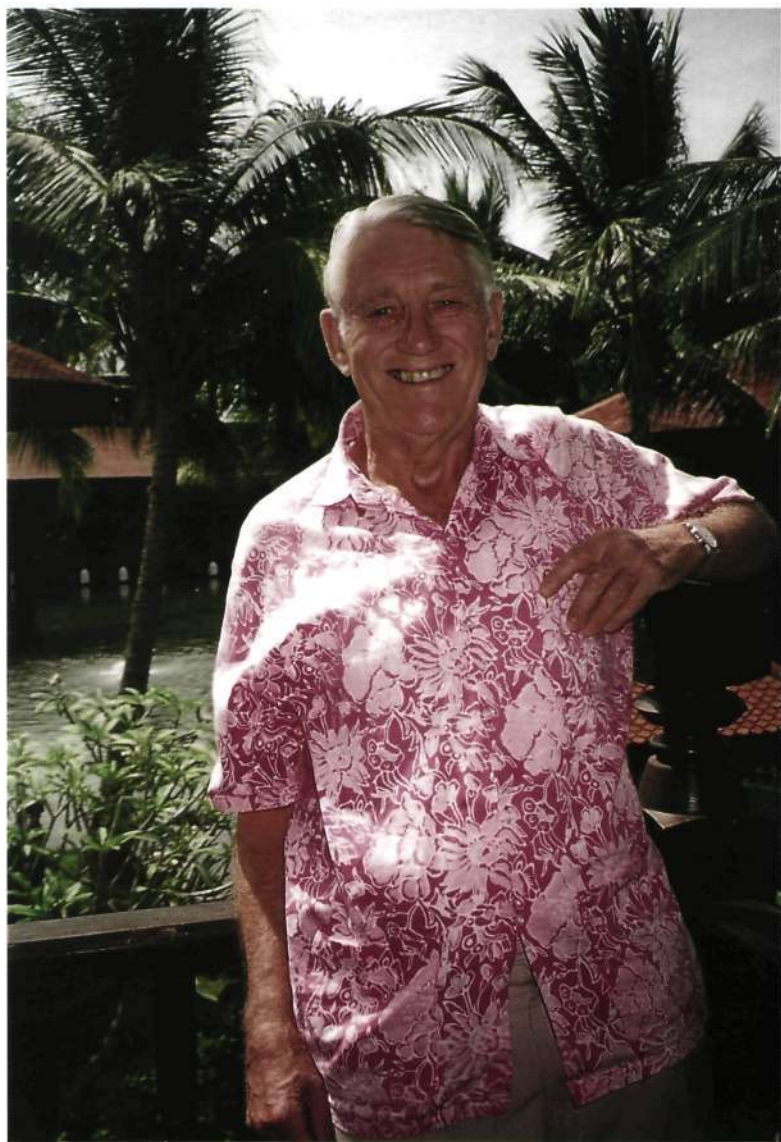


Kowloon Walled City overlooking Kowloon Bay, c1910  
HK Museum of History, Provisional Urban Council



Air-raid Shelter nearing completion, 1941  
"Ruins of War" (1996), Keung & Wordie





Michael Guilford-The Author

\* Additional illustrations for Royal Asiatic Society reprint